

SC20 SERIES

THE NEXT GENERATION



Sepura UK
9000 Cambridge Research Park
Beach Drive
Waterbeach
CAMBRIDGE
CB25 9TL
Tel: +44 (0)1223 876000

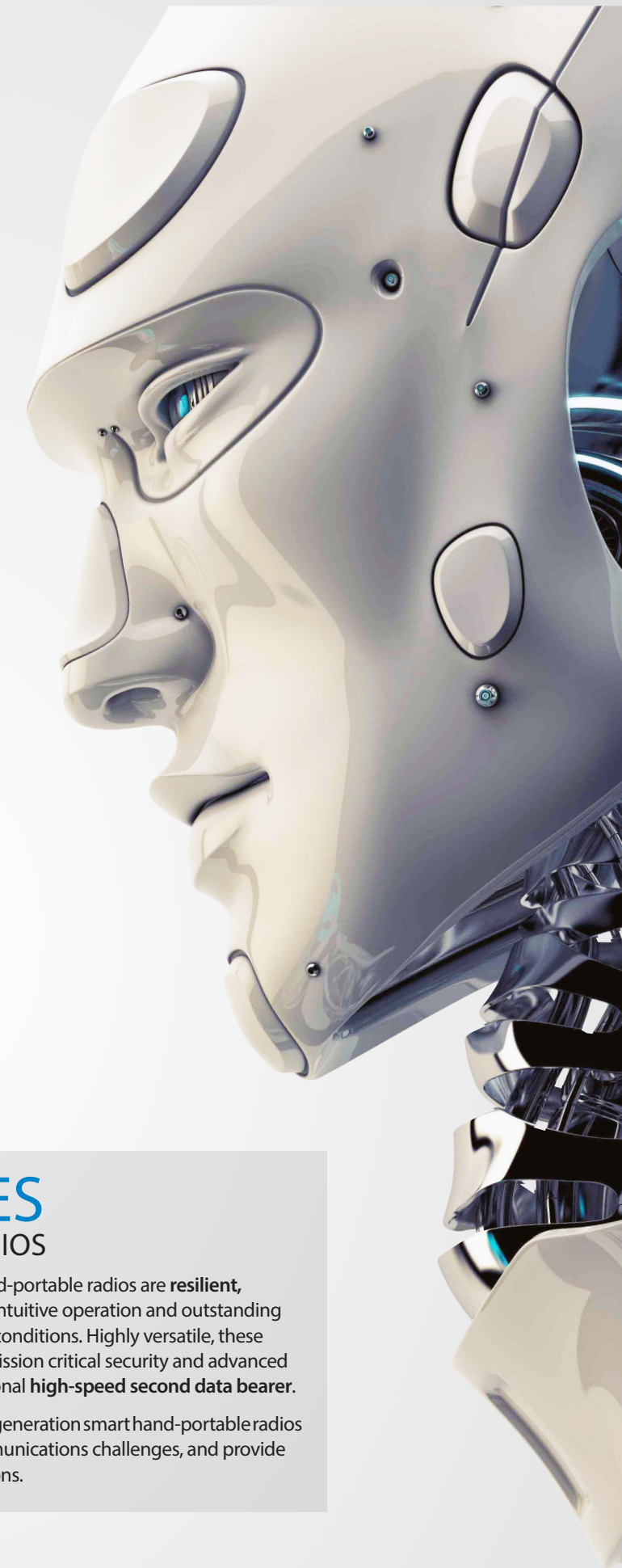
For a full list of offices and worldwide distributors, visit sepura.com

sepura
a Hytera company

© Sepura plc. For more information visit sepura.com/SC20

Sepura's policy is to continually improve its products and services. The features and facilities described in this document were correct at publication, but are subject to change without notice.

THE NEXT GENERATION



SC20 SERIES HAND-PORTABLE RADIOS

Shaped by user feedback, SC20 hand-portable radios are **resilient, intelligent and durable**, providing intuitive operation and outstanding performance, even in the toughest conditions. Highly versatile, these revolutionary radios combine the mission critical security and advanced performance of TETRA with an optional **high-speed second data bearer**.

Broadband-ready, SC20 series next generation smart hand-portable radios are designed to tackle today's communications challenges, and provide tomorrow's communications solutions.

sepura
a Hytera company

Going further in critical communications

sepura
a Hytera company

Going further in critical communications

0064_1118_V8_English

Resilient, intelligent and durable, the SC20 Series next generation smart hand-portable radios are designed to tackle today's communications challenges and provide tomorrow's communications solutions.

Shaped by user feedback, the SC20 Series provides intuitive operation and outstanding performance, even in the toughest conditions. Highly versatile, the SC20 Series combines the security and advanced capabilities of TETRA with an optional **second high-speed data bearer**.

An **enhanced apps capability** supports interaction with a range of USB and Bluetooth-linked body-worn data accessories, and interactive access to online databases via TETRA or the second high-speed data bearer.

USER FRIENDLY

The SC20 Series' intuitive user interface utilises three context keys and a **smarter menu**, making it easy to pick up and use with a minimum of training, whilst remaining familiar to existing Sepura users.

A **unique notification bar** gives instant access to five favourite features, indicates missed calls or messages, and alerts the user to any changed states, such as speaker mute or transmit inhibit. Customer-defined SmartMenus give **swift access to hundreds of soft key features**.

The **2.4" high resolution QVGA screen**, the largest on any TETRA hand-portable, anticipates increased apps usage and allows for **easy viewing in all light conditions**, including direct sunlight.

CLASS-LEADING PERFORMANCE

Powerful 2W audio with enhanced fidelity (EN-FI) technology ensures that voice communication is richer and clearer, even in high noise environments.

Class 3 high-power RF transmission, coupled with exceptional receive sensitivity, gives the SC20 Series **extended operational range**, stretching coverage into areas where it was not possible before.

UNPARALLELED ROBUSTNESS

Submersible, waterproof and dustproof, the SC20 Series boasts IP65, 66, 67 and 68 environmental protection ratings along with an **easy-clean design** that allows it to be rinsed in running water – ideal for use in the most demanding environments, such as mining or construction.

Unique water-porting technology allows for uncompromised audio clarity, even in continuous, heavy rain; Connector Protector technology guards against corrosive damage in salt-laden environments.

BROADBAND READY

Designed to meet your communication challenges, now and in the future, the SC20 Series combines **TETRA's secure and flexible voice and data communications** with an optional **second high-speed data bearer**. Its unique modular capability provides flexible upgrade paths, keeping pace with advances in data technology and minimising the need for further investment.

Smart interaction with body-worn devices such as Bluetooth connected printers, barcode readers and RFID scanners is supported. Up to 32GB of on-board user storage allows rapid access to locally stored, data-centric applications and the creation of mission critical apps using moving mapping.

SC20 SERIES THE NEXT GENERATION

GLOVE-FRIENDLY OPERATION

Large, tactile press-to-talk key, three side soft keys with haptics and the 'blind find' emergency button make the SC20 Series easy to operate, even with gloved hands

MISSED EVENT INDICATOR

A blue LED indicates that a call/message has been missed

DUSTPROOF AND WATERPROOF

IP65/66/67/68 certified, the SC20 Series' ergonomic non-slip case is impervious to water and continuous immersion to a depth of 2m for one hour. Also allows easy cleaning in running water

UNIQUE NOTIFICATION BAR

Gives rapid access to favourite features, indicates missed calls and messages, and clearly shows changed states, such as speaker mute or transmit inhibit

INTERCHANGEABLE COLOURED BAR

Allows personalisation of the radio and easy identification

TOOL-FREE ACCESS

For quick and easy substitution of the SmartCard and MicroSDHC

RFID TAG

Facilitates access control solutions, tracking of pool-issued radios and potential for integration with back-end systems

ENHANCED FIDELITY

Along with powerful 2W audio, delivers loud, clear and rich voice communication – even in the noisiest conditions

UNIQUE WATER PORTING TECHNOLOGY

Expels liquid, protecting the earpiece, speaker and both mics and maintaining clear communication even in heavy downpours

sRAC CONNECTOR

The sRAC delivers loud, clear audio to drive Sepura's range of high-performance accessories. It is compatible with Sepura STP RAC-mounted accessories

LARGE, SUNLIGHT-VISIBLE SCREEN

Ideal for use with data-rich apps. Night mode reduces glare in low light

UNIQUE SMART MENUS

Allow customisable presentation of features and hundreds of soft key functions

ENHANCED APPLICATIONS CAPABILITY

Enhanced SDA (apps) capability allows interaction with wired or wireless body-worn accessories such as printers, barcode readers and RFID scanners, and the creation of smart applications* that interact with back office systems to rapidly deliver intelligence and data to the user

RESILIENT, HARD-CAPPED KEYS

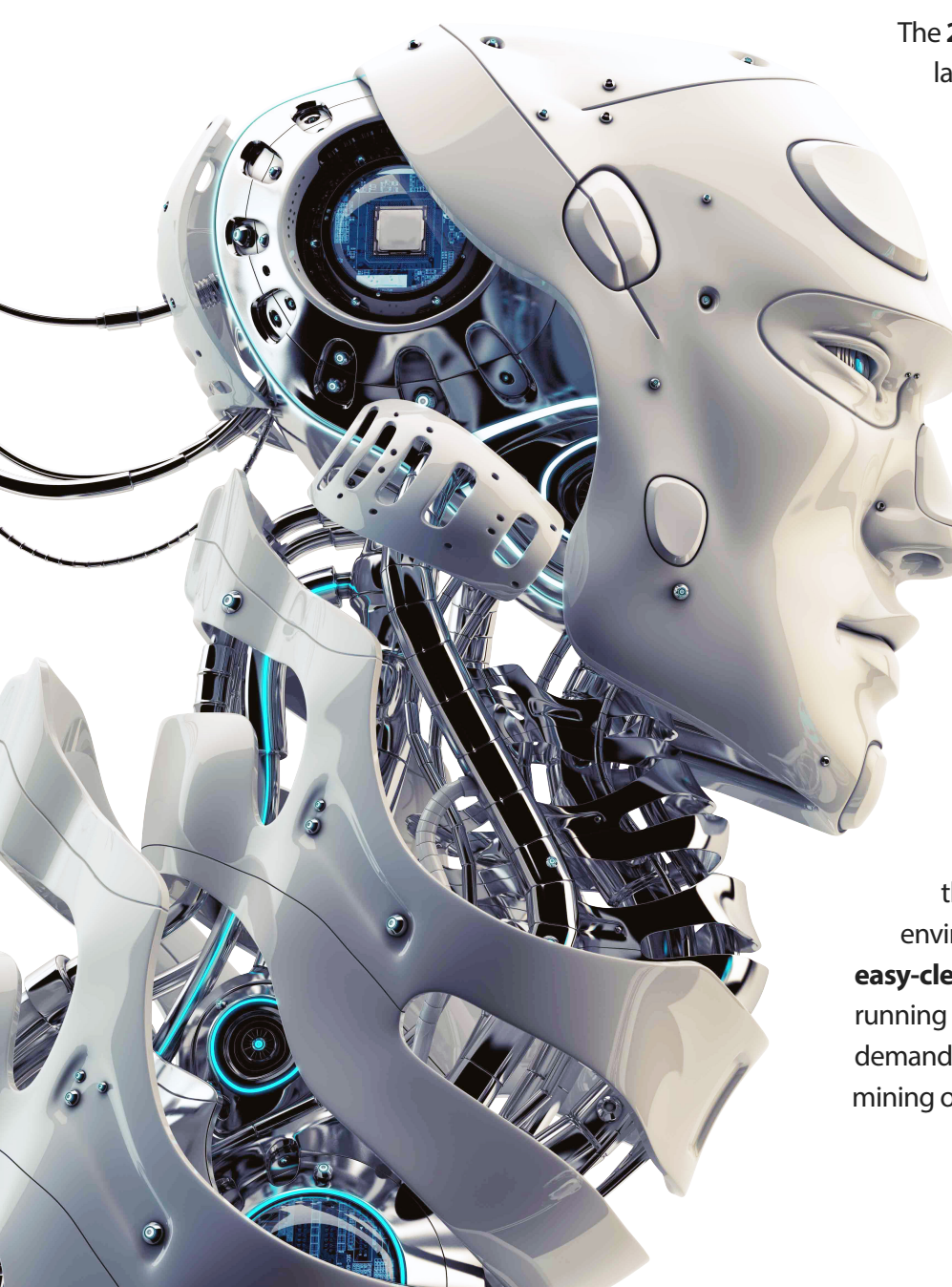
Resist abrasion with glove-friendly operation, enhanced by haptics

STP ACCESSORY RE-USE

The SC20 Series is compatible with all Sepura STP antennas, batteries** and RAC-based accessories. It is also compatible with Radio Manager 2 and all Sepura crypto management tools***

RUGGED AND SALT RESISTANT

Unique rugged fit-n-lock connector allows rapid data accessory swapping. Connector Protector technology guards against corrosion in salt-laden environments



THE SC20 SERIES COMBINES MISSION CRITICAL TETRA VOICE AND DATA WITH A SECOND HIGH-SPEED DATA BEARER IN A TOUGH, APPS-ENABLED, GO-ANYWHERE PACKAGE

For more information visit sepura.com/SC20

* Integration with Portalify solutions required. Portalify is a Sepura company. For more information, please contact your local representative.
 ** STP batteries limit the SC20 series to Class 3L RF. New Sepura STP batteries enable the SC20 series to support Class 3RF. Class 3 Support is licence-enabled.
 *** Some performance limitations may apply